



Kaip įkelti duomenis į Globe svetainę

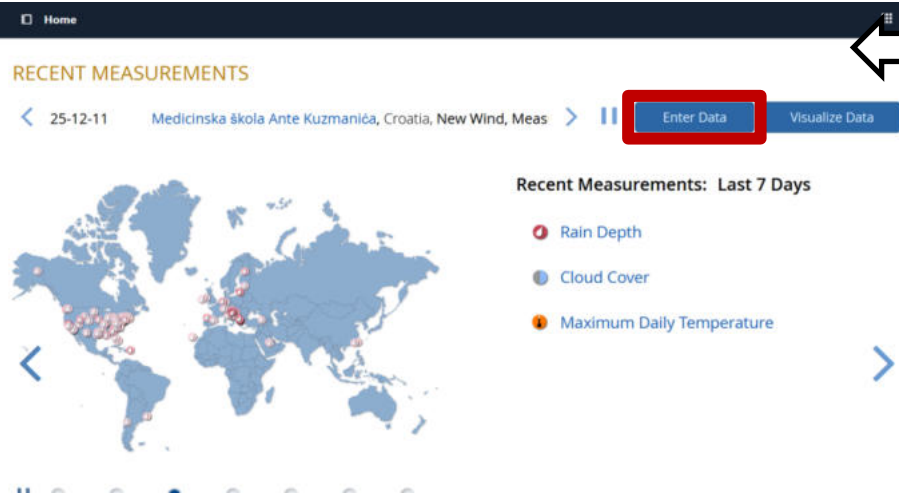
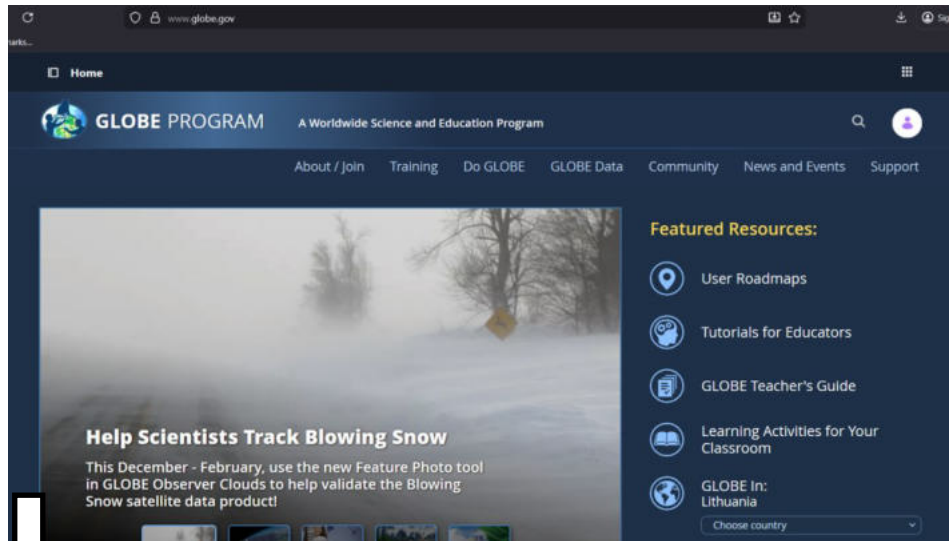


Co-funded by
the European Union



1 Etapas

Atsidarę „GLOBE“ svetainę, nuslinkite į puslapio vidurį ir susiraskite skiltį „RECENT MEASUREMENTS“.

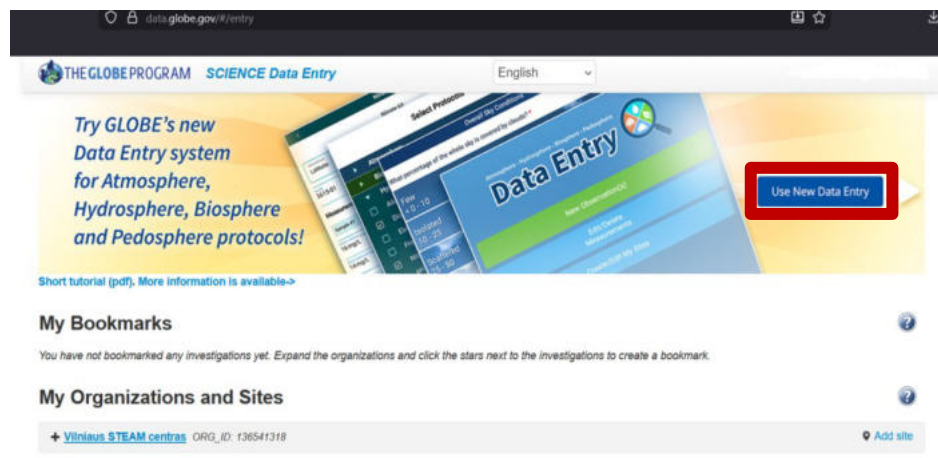


Radę, paspauskite „Enter Data“.



2 Etapas

Kai atsidarys naujas langas, spauskite „Use New Data Entry“.



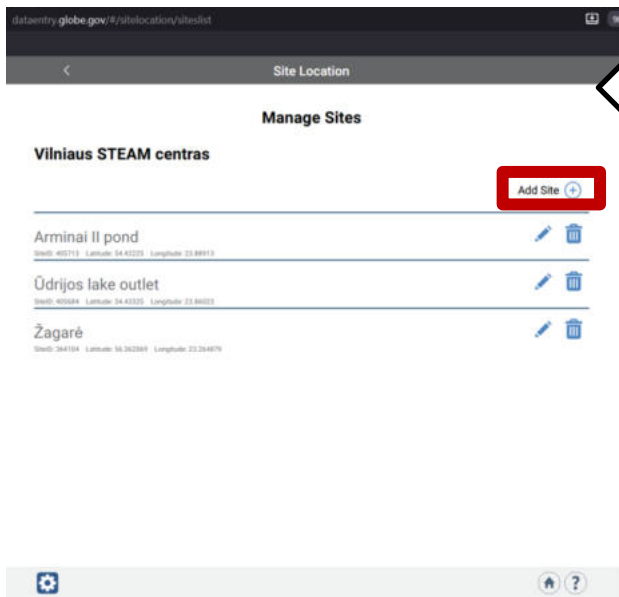
Tada spauskite „Next“.





3 Etapas

Norėdami pradėti, pirmiausia turite susikurti savo tyrimo vietą, todėl spauskite „Create / Edit My Sites“.



Tada spauskite „Add Site“.



4 Etapas

Site Location

New Site

Name: **Dusia**

(use coordinates or move/zoom map)

Latitude: 54.28327

Longitude: 23.74000

Elevation: 104.3

Map Satellite

Site Specific Comments: Dusia

Site Specifications: Atmosphere

Kurdami vietā, ierāšykite jos pavadinimā, jei neturi sugalvokite jā patys pagal artimāusią miestā, upelį ar ežerā.

Nustatykite apytikslę vietā žemėlapyje, pasirinkite vandens tipā (pvz., gēlas ar sūrus) ir nurodykite, kas tai yra (pvz., ežeras ar upė).

Site Location

Dusia

Site Specifications:

Atmosphere

Biosphere

Hydrosphere

Hydrosphere Site Setup

Water Body Name: **Dusia**

Water Body Type: Fresh Water

Water Body Source: Lake

Area of Standing Water (km²):

Average Depth of Standing Water (m):

Water Sample Location:

Can you see the bottom?

Yes No

Channel/Bank Material



5 Etapas



Site Location

Manage Sites

Vilnius STEAM centras

Add Site +

Dusia

SiteID: 400714 Latitude: 54.26227 Longitude: 25.14



Arminai II pond

SiteID: 400713 Latitude: 54.42225 Longitude: 25.69973



Ūdrijos lake outlet

SiteID: 400684 Latitude: 54.42225 Longitude: 25.69922



Žagare

SiteID: 364104 Latitude: 54.362894 Longitude: 25.244679



Site Location

- Concrete
- Vegetated Bank

Bedrock

- Granite
- Limestone
- Volcanics
- Mixed Sediments
- Unknown

Freshwater Habitats Present

- Rocky Substrate
- Vegetated Bank
- Mud Substrate
- Sand Substrate
- Submersed Vegetation
- Logs

Water Habitats Present

- Rocky Shore
- Sandy Shore
- Mud Flats/Estuary

Pedosphere

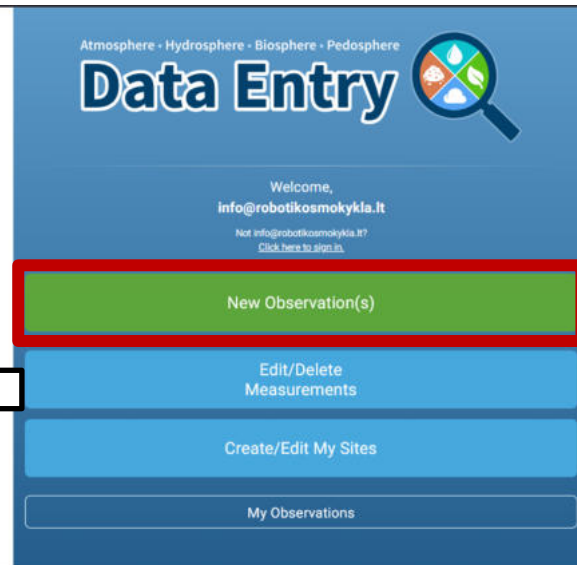
Save Site

Kai viską užpildysite, spauskite „Save Site“ ir išeikite iš „Manage Sites“ lango.



6 Etapas

Kadangi vieta jau sukurta, galite pradėti kelti duomenis. Spauskite „New Observation“.



Select Protocols

▶ Atmosphere	0
▶ Biosphere	0
▶ Hydrosphere	0
▶ Pedosphere	0

- ▶ Earth as a System Bundles
- ▶ My Protocol Bundles

What is a bundle and how/why do I name it?



Continue

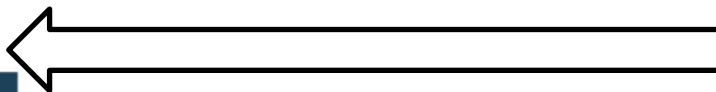
Pasirinkite „Hydrosphere“.



7 Etapas

Select Protocols

▶ Atmosphere	0
▶ Biosphere	0
▼ Hydrosphere	1
<input type="checkbox"/> Alkalinity	
<input type="checkbox"/> Dissolved Oxygen	
<input type="checkbox"/> Electrical Conductivity	
<input type="checkbox"/> Freshwater Macroinvertebrates	
<input type="checkbox"/> Nitrate	
<input type="checkbox"/> pH	
<input type="checkbox"/> Salinity	
<input checked="" type="checkbox"/> Water Temperature	
<input type="checkbox"/> Water Transparency	
▶ Pedosphere	0
▶ Earth as a System Bundles	
▶ My Protocol Bundles	



Select Protocols

▶ Atmosphere	0
▶ Biosphere	0
▼ Hydrosphere	0
<input type="checkbox"/> Alkalinity	
<input type="checkbox"/> Dissolved Oxygen	
<input type="checkbox"/> Electrical Conductivity	
<input type="checkbox"/> Freshwater Macroinvertebrates	
<input type="checkbox"/> Nitrate	
<input type="checkbox"/> pH	
<input type="checkbox"/> Salinity	
<input type="checkbox"/> Water Temperature	
<input type="checkbox"/> Water Transparency	
▶ Pedosphere	0
▶ Earth as a System Bundles	
▶ My Protocol Bundles	

What is a bundle and how/why do I name it?



Tada pasirinkite „Water Temperature“ arba bet kurį kitą norimą matavimą ir spauskite „Continue“.

What is a bundle and how/why do I name it?





8 Etapas

Site Location

Hydrosphere

Area of Standing Water (km2):

Average Depth of Standing Water (m):

Channel/Bank Material

- Soil
- Rock
- Concrete
- Vegetated Bank

Bedrock

- Granite
- Limestone
- Volcanics
- Mixed Sediments
- Unknown

Freshwater Habitats Present

- Rocky Substrate
- Vegetated Bank
- Mud Substrate
- Sand Substrate
- Submersed Vegetation
- Logs

Saltwater Habitats Present

- Rocky Shore
- Sandy Shore
- Mud Flats/Estuary

Next

Site Location

Enter Location

(use coordinates or move/zoom map)

Latitude: 54.69360

Longitude: 25.27840

Elevation: 105.4

Map Satellite

Select your site from this list of sites shown on the map:

Select from all available sites. Narrow the list by typing into the search field.

Search Site Names

- Dusia
- Arminai II pond
- Ūdrijos lake outlet

Toliau pasirinkite savo tyrimo vietą, kurią ką tik sukūrėte, arba galite sukurti naują čia pat ir spauskite „Next“.



9 Etapas

Pakeiskite datą ir laiką taip, kad jie atitiktų jūsų duomenų rinkimo laiką. Tada spauskite „Set Water Body State“.

Pasirinkite vandens būklę: ar vanduo normalus, užšalęs, išdžiūvęs, užtvindytas ar nepasiekiamas. Galiausiai spauskite „Next“.



10 Etapas

Water Temperature

Measured with

Alcohol-Filled Thermometer

Probe

Temperature Measurements

Sample #1

Temperature (Celsius) *

range -2 to 45

Temperature error. Must provide a number

+ Add Sample #2

Comments

Review

Water Temperature

Measured with

Alcohol-Filled Thermometer

Probe

Comments

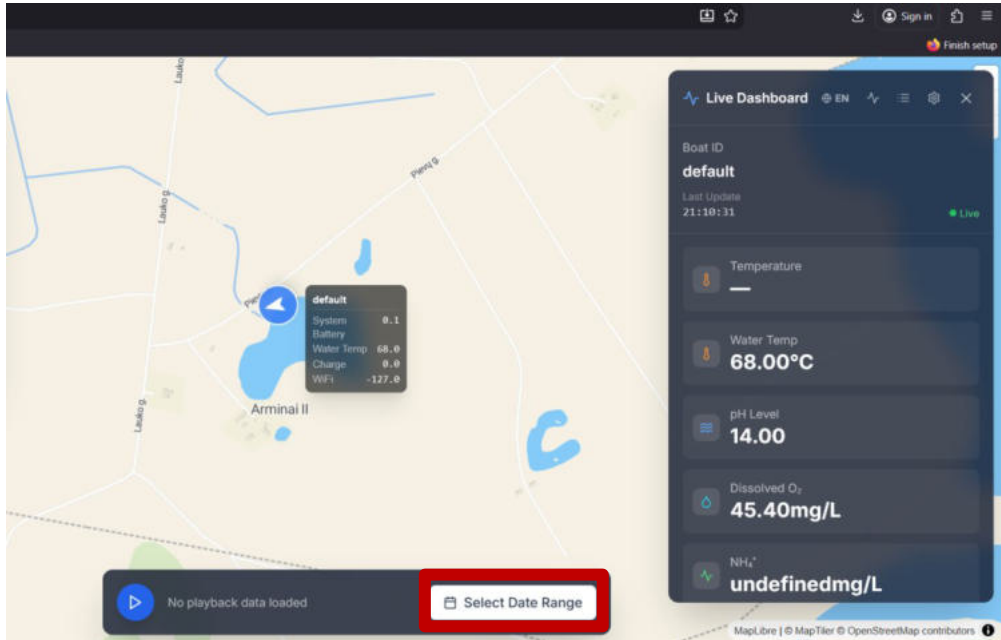
Review

Pasirinkite savo matavimo būdą ir tada atidarykite savo duomenų rinkimo svetainę: <https://r0.lt/>.



11 Etapas

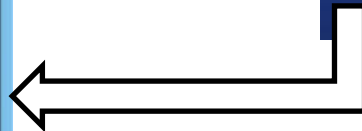
Tada įveskite savo duomenis ir prisijunkite.



The screenshot shows the 'Boat Tracker' login screen. The title is 'Boat Tracker v1.2 DEBUG'. Below the title is a 'School Login' section with the following fields:

- Username: school-username
- Password: [masked]
- Login button: [Login]

A red box highlights the login form fields. Below the form, there is a link: 'Contact your administrator for login credentials'.

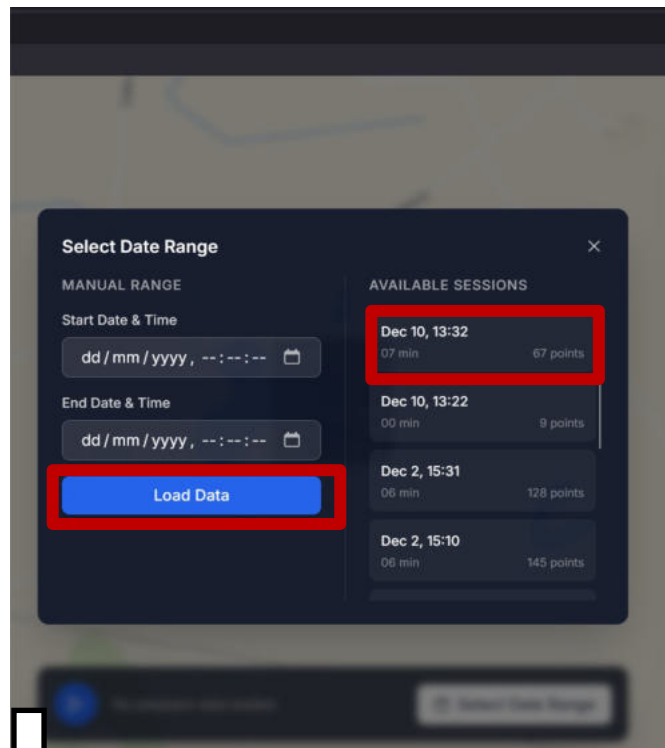
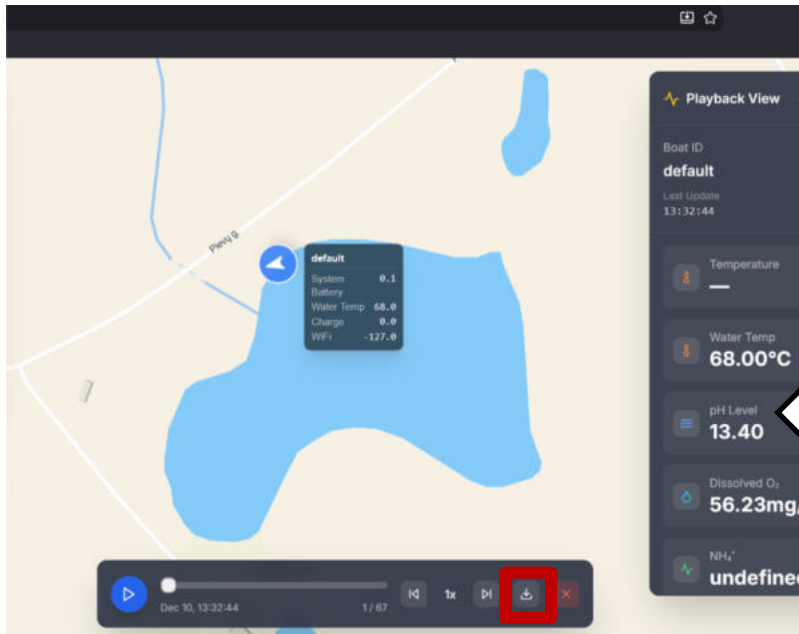


Prisijungus, paspauskite „Select Data Range“.



12 Etapas

Pasirinkite savo naujausius surinktus duomenis ir spauskite „Load Data“.



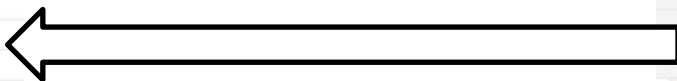
Ir kad parsisiųsti savo duomenis spauskite „Download“ mygtuka.



13 Etapas

	AC	AD	AE	AF	AG	AH	AI
	soc	speed	t1	t2	t3	t4	t5
7	0	NaN	5.5	NaN	NaN	NaN	NaN
3	0	NaN	5.44	NaN	NaN	NaN	NaN
5	0	NaN	5.44	NaN	NaN	NaN	NaN
4	0	NaN	5.44	NaN	NaN	NaN	NaN
5	0	NaN	5.5	NaN	NaN	NaN	NaN
4	0	NaN	5.44	NaN	NaN	NaN	NaN
7	0	NaN	5.44	NaN	NaN	NaN	NaN
7	0	NaN	5.44	NaN	NaN	NaN	NaN
1	0	NaN	5.44	NaN	NaN	NaN	NaN
1	0	NaN	5.38	NaN	NaN	NaN	NaN
8	0	NaN	5.44	NaN	NaN	NaN	NaN
7	0	NaN	5.44	NaN	NaN	NaN	NaN
1	0	NaN	5.38	NaN	NaN	NaN	NaN
1	0	NaN	5.38	NaN	NaN	NaN	NaN
2	0	NaN	5.38	NaN	NaN	NaN	NaN
9	0	NaN	5.38	NaN	NaN	NaN	NaN
5	0	NaN	5.38	NaN	NaN	NaN	NaN
5	0	NaN	5.31	NaN	NaN	NaN	NaN
6	0	NaN	5.31	NaN	NaN	NaN	NaN

Atsidarę Excel failą,
susiraskite savo surinktus
duomenis



boat_data_default_20251211_210725

File Home Insert Share Page Layout Formulas Dat

Calibri (Body) 11 B

AF13

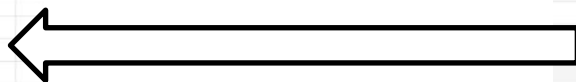
	A	B	C	D	E	F
1	Timestamp	Date	Time	Boat ID	altElli	altMsl
2	1.77E+12	#####	13:32:44	default	9150	6250
3	1.77E+12	#####	13:32:46	default	9150	6250
4	1.77E+12	#####	13:32:48	default	9150	6250
5	1.77E+12	#####	13:32:50	default	9150	6250
6	1.77E+12	#####	13:32:52	default	9150	6250
7	1.77E+12	#####	13:32:54	default	9150	6250
8	1.77E+12	#####	13:32:56	default	9150	6250
9	1.77E+12	#####	13:32:58	default	9150	6250
10	1.77E+12	#####	13:33:00	default	9140	6240
11	1.77E+12	#####	13:33:02	default	9140	6240
12	1.77E+12	#####	13:33:04	default	9140	6240
13	1.77E+12	#####	13:33:06	default	9140	6240
14	1.77E+12	#####	13:33:08	default	9140	6240
15	1.77E+12	#####	13:33:10	default	9140	6240
16	1.77E+12	#####	13:33:12	default	9140	6240
17	1.77E+12	#####	13:33:14	default	9140	6240
18	1.77E+12	#####	13:33:16	default	9140	6240
19	1.77E+12	#####	13:33:18	default	9140	6240
20	1.77E+12	#####	13:33:22	default	9140	6240



14 Etapas

	AA	AB	AC	AD	AE	AF
Count Numbers	1.58	24.64839	-117.339	0 NaN	4.94 NaN	NaN
Max	14	-3.05311	-9.26418	0 NaN	4.88 NaN	NaN
Min	14	-69.0134	15.74338	0 NaN	4.94 NaN	NaN

	AC	AD	AE	AF	AG
.339	0 NaN		4.94 NaN	NaN	NaN
418	0 NaN		4.88 NaN	NaN	NaN
1338	0 NaN		4.94 NaN	NaN	NaN
1395	0 NaN		4.94 NaN	NaN	NaN



Pasidarykite apačioje, nuo savo tikrų duomenų, langelį, kuriame išveksite vidurkį, visų duomenų surinktų per visą duomenų rinkimo laiką.



15 Etapas

Kad gautumėte suapvalintą rezultatą, langelyje įrašykite(=ROUND(AVERAGE(x),0).

Water Temperature

Measured with

Alcohol-Filled Thermometer

Probe

Temperature Measurements

Sample #1

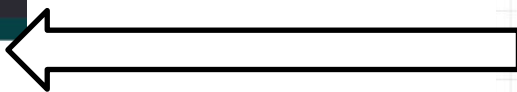
Temperature (Default): 1

5°C

+ Add Sample #2

Comments

Review



3251211_210725

Search for tools, help, and more (Alt + Q)

Page Layout Formulas Data Review View Help Draw

Name Manager Show Formulas Calculator

=ROUND(AVERAGE(AE2:AE75),0)

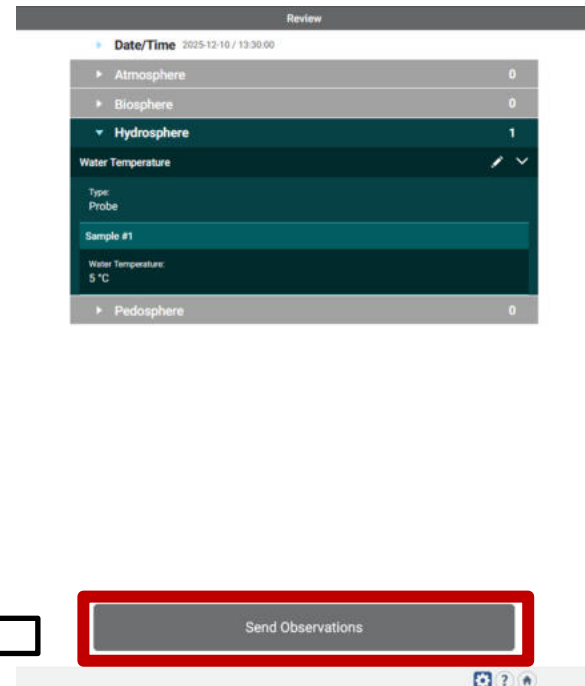
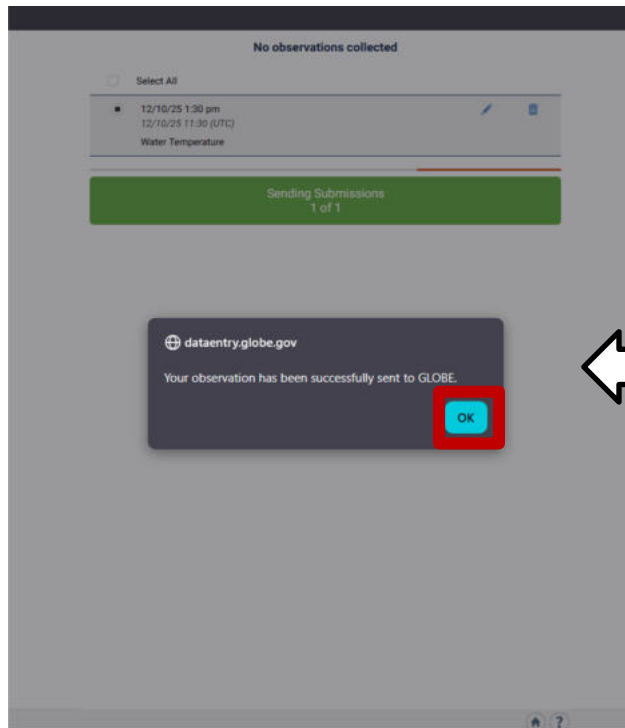
Y	Z	AA	AB	AC	AD	AE	AF	AG	AH
54.06	13.61	5.444725	-31.0713	0	NaN	4.88	NaN	NaN	NaN
54.21	13.61	2.77706	-27.6934	0	NaN	4.94	NaN	NaN	NaN
54.36	13.6	1.810676	-26.6786	0	NaN	4.94	NaN	NaN	NaN
54.36	13.6	-9.63711	-62.1646	0	NaN	4.94	NaN	NaN	NaN
54.05	13.63	1.592289	-13.8352	0	NaN	4.88	NaN	NaN	NaN
54.2	13.61	-0.26664	-6.38066	0	NaN	4.88	NaN	NaN	NaN
54.58	13.58	24.64839	-117.339	0	NaN	4.94	NaN	NaN	NaN
49.73	14	-3.05311	-9.26418	0	NaN	4.88	NaN	NaN	NaN
47.26	14	-69.0134	15.74338	0	NaN	4.94	NaN	NaN	NaN
45.4	14	-54.1475	-25.3395	0	NaN	4.94	NaN	NaN	NaN

5

Gautą rezultatą įrašykite į „GLOBE“ programą ir spauskite „Review“.



16 Etapas



Galiausiai spauskite „Send Observation“ ir po to „OK“.



17 Etapas

← Edit/Delete Measurements

Start Date:

2025-11-10

2025 - 11 - 10

End Date:

2025-12-11

Search

Past Submissions

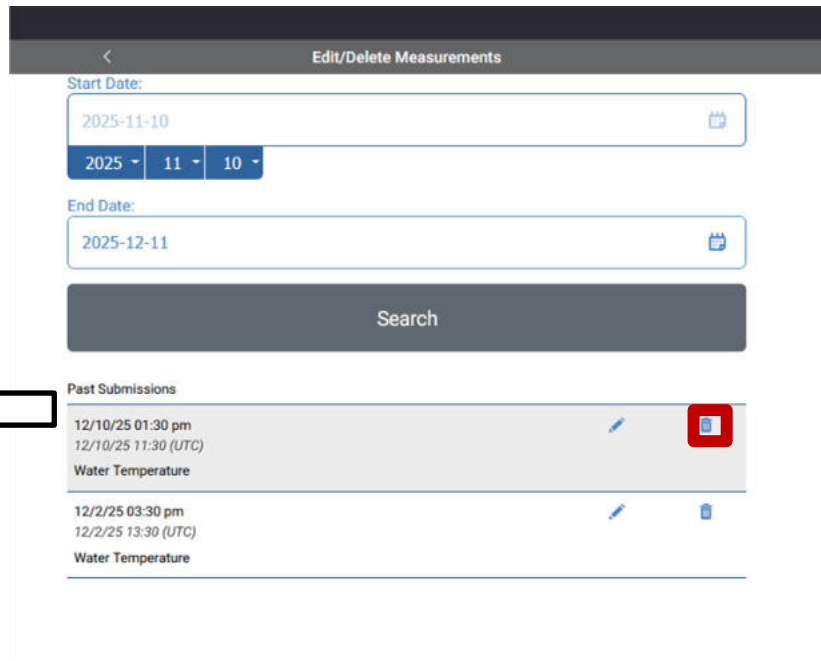
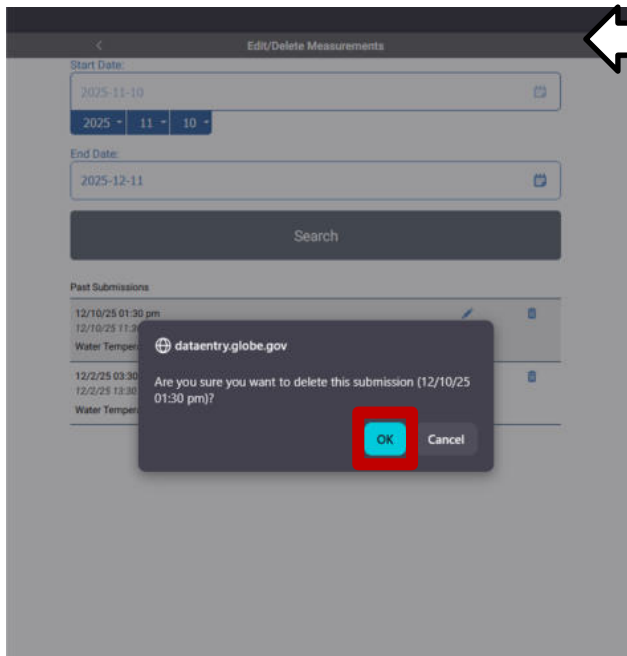
12/10/25 01:30 pm 12/10/25 11:30 (UTC) Water Temperature		
12/2/25 03:30 pm 12/2/25 13:30 (UTC) Water Temperature		



Sveikinuu!!! Jūs išsiuntėte pirmuosius savo duomenis. Jei norite juos ištrinti, spauskite „Edit/Delete Measurements“, tada „Search“.



18 Etapas



Tada spauskite šūkšlinės ženkliuką ir „OK“.

Erasmus+ KA2 Cooperation Partnerships project
Sailing Into Opportunities
No. 2023-1-LT01-KA220-SCH-000161306

sailtunities.gaminu.eu



**Co-funded by
the European Union**

Funded by the European Union. Views and opinions expressed are however those of the author(s) only and do not necessarily reflect those of the European Union or the national Agency. Neither the European Union nor the National Agency can be held responsible for them.